



QUICK REFERENCE GUIDE

**WOMAN ABUSE
COMMUNITY SERVICES
IN THE REGION OF PEEL**

Developed by:



PCAWA

PEEL COMMITTEE AGAINST WOMAN ABUSE

September 2010

QUICK REFERENCE GUIDE

WOMAN ABUSE COMMUNITY SERVICES IN THE REGION OF PEEL

AGENCY NAME		TELEPHONE #	PAGE
African Community Service	Mississauga	905-828-8787	1
	Brampton	905-460-9514	
Armagh		905-855-0299	2
Brampton Neighbourhood Resource Centre		905-452-1262	3
Catholic Cross-Cultural Services	Mississauga	905-273-4140	4
	Brampton	905-457-7740	
Catholic Family Services of Peel-Dufferin		905-450-1608	5
		905-897-1644	
	Toll Free Dufferin County	1-888-940-0584	
Elizabeth Fry Society of Peel-Halton		905-459-1315	6
Family Services of Peel	Mississauga	905-270-2250	7
	Brampton	905-453-7890	
Family Transition Place	24-Hour Crisis/ Info Line	519- 941-HELP (4357)	8
		905 -584-HELP (4357)	
		TTY: 519-942-1651	
		1-800-265-9178	
The HEAL Network		905-450-1608 x112	10
India Rainbow Community Services of Peel	Brampton	905-454-9070	12
	Mississauga	905-275-2369	
Interim Place	South	905-403-0864	14
		TTY: 905-403-0453	
	North	905-676-8515	
		TTY: 905-676-0284	
Malton Neighbourhood Services		905-677-6270	16
Merge Counselling and Educational Services		905-855-8028	17
Muslim Community Services	Brampton	905-790-1910	18
	Mississauga	905-828-1328	
Oasis Centre des Femmes		905-454-3332	19
	French Crisis Line	1-877-336-2433	

Peel Regional Police	Non-Emergency Emergency	905-453-3311 911	20
Peel Victim Witness Assistance Program		905-456-4797 1-866-788-5678	21
Punjabi Community Health Centre		905-790-0808	23
Salvation Army Family Life Resource Centre Honey Church	24 hour Crisis Line Shelter	905-451-6108 905-451-4115	24
Salvation Army Women's Counselling Centre		905-820-8984	25
Sexual Assault/Rape Crisis Centre of Peel	24 hour Crisis Line Crisis Line Caledon	(905) 273-9442 1-800-810-0180	26
Trillium Health Centre	Counselling Services Pediatric Sexual Assault Services and Follow-Up Clinic	905-848-7580 x 2548 905-848-7689 905-848-7580 x2548	28
United Achievers Community Services		905-455-6789	29
Victim Services of Peel	24-Hour Client Services	905-568-1068 905-568-8800	31
Vita Centre of Peel		905-858-0329	33

Description of Services:

- **Crisis Response:** Immediate one time response or intervention to an urgent service request by a woman in a crisis situation. It consists of a crisis counselling session in person or by phone, information if requested by the client, service options and a copy of the Safety Plan.
- **Crisis Support Services:** The primary purpose is to ensure that the client is connected with the woman abuse service system in the community. The service consists of brief service intervention (1-6 sessions) until First Stage Counselling services can be provided.
- **First Stage Counselling:** The focus is on safety and health issues, information on the rights of women and children, providing one-on-one support in accessing appropriate community resources, empowering women to take proactive actions most appropriate to their situation.
- **Second Stage Counselling:** Counselling services for women who no longer live in abusive relationships or who choose to remain with their partners and learn to self-protect if future abuse occurs. The focus is on developing a more in-depth understanding of woman abuse and empowering women to live in an abuse free environment.

AFRICAN COMMUNITY SERVICE

<http://www.africancommunityservices.com/index.php>

Mississauga: 905-828-8787 (tel) • 905-828-8781 (fax)

Brampton: 905-460-9514 (tel) • 905-460-9769 (fax)

Women:

To provide appropriate culturally sensitive and language specific services to reduce woman abuse and violence within the African Canadian Community in Peel.

To improve awareness of behaviours, activities and language that constitutes abuse.

To Increase knowledge and information on abuse, domestic violence and to help women recognize abuse and victimization in their relationship.

Workshops on various topics on Violence and Abuse Prevention (individual and family counselling/ group counselling/ client visitation and children counselling/ advocate for client/ client empowerment/ liaise with law enforcement agents/ support clients emotionally/ carry out community outreach in different places within Peel region/ network with other service providers in Peel region).

Also one-on one and group counselling, referrals, information, advocacy and support services in women's health issues including Sexual Health, Pregnancy, Parenting, Birth Control, Family Planning, Domestic Violence, Youth and Parent Relationships and Personal and Social Skills Development.

Seniors:

Elder Abuse, Self-care and Safety, Income Support and Maintenance, Health and Nutrition, Legal rights and Responsibilities.

ARMAGH

905-855-0299 (tel) • 905-855-3189 (fax)

2nd Stage Housing: We provide safe, supportive housing for women and their children who have left abusive partners. (Maximum stay is up to one year). We have 8 self contained, furnished units for the women and children we serve. There are 2 two bedroom units and 6 one bedroom units.

Referrals: Armagh sends a notice of availability to the surrounding shelters when a unit becomes available and the women must be referred by the shelter they are residing in.

Transitional Support: The Transitional Support Worker provides emotional and practical support while the family is living at Armagh as well as up to one year following her departure from Armagh. We provide specific support and advocacy around issues such as; family/criminal court, housing and independent living.

**Individual/
Group Support:** Group/Individual Supportive Counselling is a part of the mandatory program that each resident agrees to when accepting an offer of occupancy at Armagh. These groups include topics such as, but not limited to budgeting, self-esteem, parenting, and independent living.

BRAMPTON NEIGHBOURHOOD RESOURCE CENTRE

www.bnrc.org

905-452-1262 (tel) • 905-452-1365 (fax)

Programs Available: Programs for new parents (birth to 12 months), preschool programs (12 months to 6 years), youth program (7 to 16 years), teen moms program (13 to 21 years), Employment Services, Settlement Services (for newcomers to Canada).
Available in, Punjabi, Hindi and Urdu.



CATHOLIC FAMILY SERVICES OF PEEL-DUFFERIN

www.cfspd.com

Brampton:
10 Gillingham Dr.
Brampton, ON, L6X 5A5
Tel: 905-450-1608
Fax: 905-450-8902

Mississauga:
10 Kingsbridge Garden Circle
Mississauga, ON, L5R 3K6
Tel: 905-897-1644
Fax: 905-897-2467

Toll Free Dufferin County: 1-888-940-0584

Counselling:

Walk-In Clinics Available:

Immediate access to counselling services.

Mississauga: Tuesdays 12:30-7:30pm

Brampton: Thursdays 12:30 -7:30pm

Appointments available in Bolton and Orangeville. Please call Central Intake .

VAW Clients: Priority Access to brief counselling (1-6 sessions)
Crisis intervention, Assessment, Safety Planning Advocacy and/or Referral
Diverse language capacity and cultural interpreters available upon request.
First 6 sessions free.

Individual, Couples and Family:

One to one therapeutic counselling for Individuals, couples and/or families.
Fees are based on a sliding scale.

Groups: A number of 1st and 2nd stage trauma-recovery groups running throughout the year.

Contact: Central Intake: 905-450-1608 x 112

ELIZABETH FRY SOCIETY OF PEEL-HALTON

www.efrypeelhalton.ca

905-459-1315 (tel) • **905-459-1322** (fax)

Delivery of programs and services to women and youth who are or may be at risk of coming into conflict with the law within the Peel-Halton Region.



FAMILY SERVICES OF PEEL

www.fspeel.org

Mississauga: 905-270-2250 (tel) • Central Intake: 905-270-2869 (tel)
Brampton: 905-453-7890 (tel) • Central Intake: 905-453-5775 (tel)

Counselling:

Immediate Intervention Service: (within 48 hrs)
Counselling is available to women who are currently in, or who have recently left an abusive relationship. Up to 6 sessions at no cost. Assessment, support, referrals and safety planning services.

Walk-in services: Wednesdays 12:00am -8:00pm
walk-in counselling services both locations.
No fee.

2nd Stage Counselling:

One-to-one therapeutic counselling. Up to 12 sessions with a fee on a sliding scale.

Abused Women's Group:

Stage 1 and Stage 2 closed groups that explore the dynamics of abuse. Open to women who are not presently in crisis. No fee.
Open groups available for women who are not presently in crisis. No fee.

Languages offered:

English, French, Bosnian, Croatian, Farsi, German, Romanian, Serbian, Hindi, Urdu, Macedonian, Malayalam, Polish and Oriya

FAMILY TRANSITION PLACE

24-Hour Crisis/Info Line:

519- 941-HELP (4357)

905-584-HELP (4357)

1-800-265-9178

TTY: 519-942-1651

519-942-4122 (tel) • 519-942-8243 (fax)

Safety:

Emergency Shelter: Safe, secure shelter for women, with or without children, who are experiencing abuse or housing issues.

Emergency Transportation:

Emergency transportation to be able to access the shelter and counselling.

Safety Planning:

Practical support to help you develop a safety plan to keep you and your children safe.

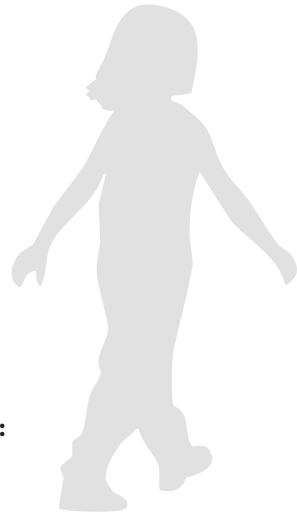
Support:

24 hr Crisis/Info Line:

Non-judgmental and supportive counselors available with information and a listening ear, day or night.

**Individual & Group
Counselling:**

Encouragement, compassion and guidance to help you overcome the impact of emotional, verbal, financial, psychological, spiritual, sexual or physical abuse.



Counselling for Sexual Assault Survivors:

Help whether you were recently assaulted or sexually abused as a child.

Transitional Support: Help with identifying and overcoming the practical hurdles to building a stronger life – employment, housing, education, and personal skills.

2nd Stage Housing: Temporary accommodation (up to 6 months) to help you transition to independent housing.

Legal Support: Information and guidance to help you navigate the legal systems.

Children’s Services: Workshops and counselling for children who have witnessed women abuse.

HEAL NETWORK (HELPING END ABUSE FOR LIFE)

www.healnetwork.org

905-450-1608 x112 (tel) • 905-450-8902 (fax)

FREE programs dedicated to helping children
HEAL from their exposure to Woman Abuse.

Helping Mothers and Children Survive Abuse Together (HMCSAT)

This is a ten-week closed group for women, and their children, ages newborn to 12 years, who have been impacted by their exposure to woman abuse. The focus of the group is to empower women in becoming the experts in helping their children learn how to lead violence- free lives. Multicultural and Cultural/Language specific groups are available.

Alternative Intervention Program

This is a program intended for families who require additional support. Families may be referred to this program when there is help needed with:

- Acute trauma
- Managing impacts of trauma
- Relationship building between the caregiver and the child
- Enhancing parenting skills
- Developing conflict resolution skills

Breaking Down the Walls

Youth participating in this program work with a variety of expressive arts, such as clay, pain and drama. This creates a safe environment for group members to speak of their experiences.

This program consists of 10 sessions, each focusing on a different topic including:

- Power of relationships
- Safety skills
- Anger and conflict resolution
- Breaking the cycle of violence
- Discussing gender roles

Lyrical Quest: Changing the Script

Lyrical Quest is an 8-week group program for 13 to 16 year olds who have been exposed to violence against women in their families. Youth will be encouraged to share their views through music, spoken word, poetry and art. Youth are challenged to think critically about the influences that music and media messaging have in their lives. Teens gain skills that can help them develop healthy relationships

Workshops

Workshops for youth and adults are available for a variety of topics, including:

- Healthy and Unhealthy Relationships
- The effects of Violence Against Women on Children
- The HEAL Network: Programs and Services

INDIA RAINBOW COMMUNITY SERVICES OF PEEL

www.indiarainbow.org

Brampton 905-454-9070 (tel) • 905-454-2762 (fax)

Mississauga 905-275-2369 (tel) • 905-275-6799 (fax)

Crisis Response

Immediate one-time urgent response or intervention for women in crisis

Crisis Support Services

Brief service intervention (1-6 sessions) that connects the women to the VAW and social service system and often includes information and referral.

Shelter

Emergency short-term accommodations for women with or without children, who are fleeing abusive situations.

Supportive/Second Stage Housing

Provides housing for women with or without children who have left abusive situations and who have identified a need for ongoing support. Programs, services and counselling are often provided on site.

Housing Assistance

Provides women who are or have been experiencing abuse, with support in finding appropriate housing.

First Stage Counselling

The focus is on safety issues, information on the rights of women and children, providing one-on-one support in accessing appropriate community resources, empowering women to take proactive actions.

Second Stage Counselling

Counselling services for women who no longer live in abusive relationships or who choose to remain with their partners and learn to self-protect if future abuse occurs. The focus is on developing a more in-depth understanding of women abuse and empowering women to live in an abuse free environment.

Legal Support

Provides support, advocacy and assistance with understanding and navigating the legal system (including but not limited to criminal and family court systems)

Medical Services

Provides services that document and/or treat injuries sustained as a result of a physical or sexual assault

Workshops/Support Groups

Provides information, skill development, and peer support in a group setting.

Interpretation & Translation

Services available in English, Hindi, Punjabi, Urdu, Tamil, Gujarati, Bengali, Konkani, Kannada and Malayalam. Free cultural interpretation service for other language groups through the Multilingual Community Interpreter Services (Ontario).

Legal Advocacy: Provides information, assistance, support, advocacy and guidance through the legal system.

A Housing Program: Provides assistance in finding affordable housing. Helps women turn housing into a home.

Transitional & Housing Support Program (THSP):

An outreach service for women who have experienced violence and provides counselling, advocacy and support to women of diverse backgrounds who may not access shelter services. In addition to supportive counselling the THSP advocates can assist women with safety planning, housing applications, budgeting, life skills and obtaining Legal Aid.

MALTON NEIGHBOURHOOD SERVICES

www.mnsinfo.org

905-677-6270 (tel) • 905-677-6281 (fax)

Counselling:

Crisis: Response and counselling.

Support: Provide support and information on financial, legal and housing matters.

Transitional Support: To abused women and children.

Referrals: Connects women to community resources.

Group Facilitation:

Educational Workshops: On health, safety, and parenting, etc.

Support Group: This group is ongoing and free.

MERGE COUNSELLING AND EDUCATIONAL SERVICES

www.merge-counselling.com

905-855-8028 (tel) • 905-855-5278 (fax)

Counselling

Individual counselling for women and men who have been or are currently in an abusive relationship.

Women Living In Anger

PAR program. Closed group for women who are referred through the court, probation, other agencies or self.

Group program:
Wednesday evening

Fees: sliding scale

Drop in Group

Group for survivors of domestic violence

Legal Support

Criminal and family court

Partner Assault Response (PAR) Programs

Component of Ontario's Domestic Violence Court program, are specialized counselling and educational services offered to individuals who have assaulted their partners. Some offenders are ordered to attend the PAR program by court. PAR programs aim to enhance victim safety and hold offenders accountable for their behaviour. Cultural interpreters available for non English speaking clients.

Group programs: Monday,
Tuesday, Saturday

Fees: sliding scale

French: PAR programs
are offered in French

Youth Program

Domestic violence program for youth 16 to 18

MUSLIM COMMUNITY SERVICES

www.muslimcommunity.org

Brampton 905-790-1910 (tel) • 905-790-3866 (fax)

Mississauga 905-828-1328 (tel) • 905-828-8439 (fax)

Counselling:

Crisis: Intake, assessment, and intervention, including appropriate referrals.

Support: Short term and long term individual and group counselling.

Support Groups: Open-ended women's support groups are conducted on the last Tuesday of the month from 12pm-2pm at the Brampton Office.

Outreach: Workshop and Radio Program. Weekly radio program is conducted for one hour every Wednesday from 3:00-4:00 pm on AM 770.

Workshops:

Monthly workshops held for public education and awareness on the issue of family violence.

MCS Youth Club:

Incorporates a homework club, reading circle and discussion groups for youth in the community. Offered daily in Mississauga location only, from 4pm-6pm.

Seniors Group:

Focuses on encouraging social and recreational activities for isolated seniors. Offered in Mississauga location only on last Thursday of the month from 1pm-3pm.

MCS Food Bank:

Based in our Mississauga office, MCS food bank provides short term assistance with a food hamper to needy clients with priority given to single mothers.

OASIS CENTRE DES FEMMES

www.oasisfemmes.org

French Crisis line:

1-877-336-2433

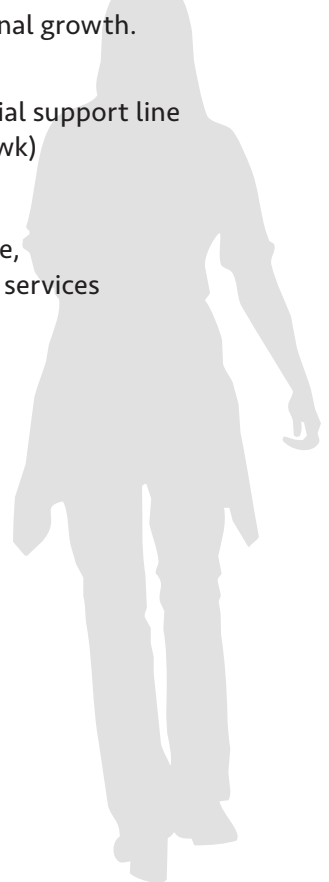
905-454-3332 (tel) • 905-454-9437 (fax)

Support/ Information: Delivers free and confidential services to Francophone women.

(16 yrs and over) Assist women who are victims of violence (as well as immigrants, refugees and those in search of employment) to gain insights that allow for life changes, use their inner resources to deal with the issues and achieve personal growth.

Counselling/ Services: French crisis line provincial support line (available 24 hrs/7 days/wk)

Counsellors provide crisis intervention and advice, information, support and referral to community services



PEEL REGIONAL POLICE

www.peelpolice.ca

Non-Emergency number:

905-453-3311

Emergency number:

911

Peel Regional Police currently has 5 operational Divisions, operating 7 days a week, 24 hours a day, to meet the needs of victims/families dealing with domestic/family violence. In addition, a number of community stations are available to attend, with somewhat reduced hours of operation.

Uniform personnel from the Divisions will respond to complaints of domestic/family disputes, and document same. In situations where reasonable grounds exist regarding an offence, a comprehensive investigation will be conducted to support a charge, and to address the safety needs of the victim/family.

PEEL VICTIM WITNESS ASSISTANCE PROGRAM

905-456-4797 (tel) • 905-456-4796 (fax)
1-866-788-5678

Crisis Response

Immediate one-time urgent response or intervention for a woman in crisis.

Crisis Support Services

Brief service intervention (1-6 sessions) that connects the woman to the VAW and social service system and often includes information and referral.

Shelter

Emergency short-term accommodations for women with or without children, who are fleeing abusive situations.

Supportive/Second Stage Housing

Provides housing for women with or without children who have left abusive situations and who have identified a need for ongoing support. Programs, services and counselling are often provided on site.

Housing Assistance

Provides women who are have been experiencing abuse, with support in finding appropriate housing.

First Stage Counselling

The focus is on safety issues, information on the rights of women and children, providing one-on-one support in accessing appropriate community resources, empowering women to take proactive actions.

Second Stage Counselling

Counselling services for women who no longer live in abusive relationships or who choose to remain with their partners and learn to self-protect if future abuse occurs. The focus is on developing a more in-depth understanding of women abuse and empowering women to live in an abuse free environment.

Legal Support

Provides support, advocacy and assistance with understanding and navigating the legal system (including but not limited to criminal and family court systems).

Medical Services

Provides services that document and/or treat injuries sustained as a result of a physical or sexual assault.

Workshops/Support Groups

Provides information, skill development, and/ or peer support in a group setting.

Culture/ Language

English, French, Italian, Punjabi, Hindi, Urdu and Armenian

PUNJABI COMMUNITY HEALTH CENTRE

www.pchs4u.com

905-790-0808 (tel) • 905-457-3902 (fax)

SAHARA Women's Group:

An aftercare program providing long-term support to abused women and children. Group runs in Mississauga.

SAHARA Youth Group:

Program deals with issues of deviant behaviour, cultural conflict and substance abuse.

Parenting Sessions:

Provided at various Gurdwaras and schools throughout Peel. No charge.

Punjabi Food Bank:

For women and children surviving abusive situations.

Counselling Program:

(Healing through Alternative Methods) culturally appropriate counselling for individuals, couples and families.

SALVATION ARMY FAMILY LIFE RESOURCE CENTRE – HONEY CHURCH

www.flrc.ca

Shelter: 905-451-4115 (tel) • 905- 451-4245 (fax)

24 hour Crisis Line: 905-451-6108

Emergency Housing

Transitional services for abused women and children. General stay 4 to 6 weeks.

Legal Advocacy

Legal process support including accompaniment to court and any other legal appointments.

Group Facilitation

Discovering Me: 8 week drop-in program designed to develop higher self esteem for women. Walk-ins and ex-clients welcome.

Drop in Day Groups: Open to the community, about such topics as parenting and abuse.

Life Skills Group: Open to the community, about such topics as stress management, returning to school, time management, etc.

Transitional Support Follow up

Services provided by outreach counselor. Outreach counselor stays in touch with ex clients for a period of 6 months.

Housing

Advocate for residents and ex-residents to find housing.

Women's Program

24 hour Crisis Line and one-on-one counselling for all residents.

Child/Youth Program

In-house residential, one-on-one counselling, and groups, Child Care room and Mom & Tots group.

SALVATION ARMY WOMEN'S COUNSELLING CENTRE

905-820-8984 (tel) • 905-820-2050 (fax)

Crisis Response: Immediate one-time urgent response or intervention for women in crisis.

Crisis Support Services:

Brief service intervention (1-6 sessions) that connects the women to the VAW and social system and often includes information and referral.

Shelter: Emergency short-term accommodations for women with or without children, who are fleeing abusive situation.

Supportive/Second Stage Housing:

Provides housing for women with or without children who have left abusive situation and who have identified a need for ongoing support. Programs, services and counselling are often provided on site.

Housing Assistance: Provides women who are or have been experiencing abusive, with support in finding appropriate housing.

CONT'D... SALVATION ARMY WOMEN'S COUNSELLING CENTRE

First Stage Counselling:

The focus is on safety issues, information on the rights of women and children, providing one-on support in accessing appropriate community resources, empowering women to take proactive actions.

Second Stage Counselling:

Counselling services for women who no longer live in abusive relationships or who choose to remain with their partners and learn to self-protect if future abusive occurs. The focus is on developing a more in depth-understanding of women abuse and empowered women to live in an abusive free environment.

Legal Support:

Provides support, advocacy and assistance with understanding and navigating the legal system (including but not limited to criminal and family court systems).

Medical Services:

Provides services that document and/or treat injuries sustained as a result of a physical or sexual assault.

Workshops/Support Groups:

Provides information, skill development, and/or peer support in a group setting.

SEXUAL ASSAULT/RAPE CRISIS CENTRE OF PEEL

www.sarccp.org

24 hour Crisis Line:

905-273-9442

Crisis Line Caledon:

1-800-810-0180

Office: 905-273-3337 (tel) • 905-273-3336 (fax)

Anonymous and Confidential

Emergency Counselling

If you have been sexually assaulted/abused within the past 3 months and are in crisis or need support with court, short term emergency counselling sessions (up to 5 sessions) are available. All emergency sessions will be booked within 72 hours. Call for intake and information.

Individual Counselling

Available to women 16 or older who are survivors of childhood sexual abuse and/or recent assault/abuse. Up to 20 individual sessions available. Waiting list. Please call for intake and more information.

Support Persons Counselling

Available to both female and male support persons of women who have experienced sexual violence. Up to 5 sessions. Waiting list. Please call for intake and more information.

Crisis Line

Available 24 hours to women who have experienced sexual abuse/assault childhood or recent, support as well for support persons of survivors of sexual assault/abuse. Line also open to male survivors of sexual abuse/assault.

Group Counselling

Closed groups for women ages 16 and older, who are survivors of past or recent sexual violence. Please call for information.

Workshops

Psycho educational workshops
To be offered 2-3 times per year. Groups are open format, 6-10 weeks and available to all women 16 years of age or older who have experienced sexual abuse/assault.

TRILLIUM HEALTH CENTRE

http://www.trilliumhealthcentre.org/programs_services/womens_childrens_services/womensHealth/sexualAssaultDomesticViolenceServices.html

905-848-7580 x 2548 (tel) • 905-848-7612 (fax)

Counselling Services: 905-848-7689

**Pediatric Sexual Assault Services and Follow-Up Clinic:
905-848-7580 x 2548**

DOMESTIC VIOLENCE SERVICES

Medical Services: 24-hour service offered by access through the Emergency Department for women 16 years of age or older to document and treat injuries sustained as a result of domestic violence. Follow up clinic is available to provide a range of medical services. These may include: re-documentation of injuries incurred as a result of domestic violence, photographing injuries; care related to medication and/or results of STD testing.

Counselling Services: Free counselling sessions, on an outpatient basis, for women 16 years of age or older who have sustained injuries as a result of domestic violence. Counselling services available in Mississauga or Brampton. (Evening appointments available).

SEXUAL ASSAULT SERVICES

Medical Services: 24-hour service offered by access through the Emergency Department, for females or males 12 years or older, to document and treat injuries sustained as a result of a sexual assault that has occurred within the last 72 hours. Follow up clinic is available to provide a range of medical services, including care related to medication and/or results of STD testing.

Counselling Services: Up to 25 free counselling sessions, on an outpatient basis, for female or male survivors of recent sexual assault who are 12 years or older and to female and male survivors sexually assaulted after the age of 16. Counselling services available in either Mississauga or Brampton. (Evening appointments available).

Pediatric Medical Sexual Assault Services:

With consultation or access through the Emergency Department, for children under the age of 12, to document and treat injuries sustained as a result of sexual assault.

Pediatric Counselling Services:

Psycho-educational counselling is available to the parent/caregiver and appropriate referrals are made for children.

UNITED ACHIEVERS COMMUNITY SERVICES

www.unitedachievers.org

905-455-6789 (tel) • 905-455-6162 (fax)

Violence Against Women Program

- Support groups
- Telephone crisis intervention
- One-on-One Supportive counselling
- Information and referrals
- Accompaniment

Group Facilitation: Biweekly support group.

Advocacy: Accompaniment and information (i.e. housing and legal).



VICTIM SERVICES OF PEEL

www.vspeel.org • info@vspeel.org

24-Hour Client Services Line :

905-568-1068

905-568-8800 (tel) • 905-564-2844 (fax)

Crisis Intervention: 24 hours a day, every day of the year support to persons victimized by crimes or tragedies. Telephone outreach, office appointments, information and referrals are provided. Police initiated scene attendance.

Critical Incident Debriefing:

Counselling in the workplace or other locations where a traumatic incident has occurred helps those affected cope with the event. Our Critical Incident Stress Management (CISM) trained counselors will work with groups and individuals to help them debrief following a trauma.

Short Term Counselling:

Counselling and information about community resources and referrals.

Supportlink/Domestic Violence

Emergency Response System (DVERS):

Enhanced protection, intensive safety planning and ongoing counselling to help people at high risk of violence. Includes 911 one-touch emergency cell phones and personal safety alarms directly linked to Peel Regional Police.

CONT'D... VICTIM SERVICES OF PEEL

Legal Advocacy: Advocacy within the judicial process information, support and accompaniment for women during bail hearing.

Transitional & Housing Support: Development of structured safety & transitional plans helps female victims of violence and their children who are leaving an abusive partner to establish violence-free lives in the community.

REACH Program: REACH (Resources, Education, Advocacy, and Community Help) packages for individuals, groups and organizations provide information about community services specific to their personal circumstances following victimization. Brochures are available in several languages.

SAFE South Asian South Asian Family Enrichment Program:

Collaboration with individuals, cultural centres, businesses and other groups within ethno-specific communities to provide culturally-appropriate services that assist women, men and children in eliminating violence within their families.

VITA CENTRE OF PEEL

www.vitamanor.org

905-858-0329 (tel) • **905-858-4199** (fax)

Support/ Information:

Support for pregnant and parenting youth; assisting youth to live their fullest potential through support programs, education and advocacy. We promote awareness and understanding of the impact of unplanned pregnancy on families and the community.

Programs:

Support in the Community:

Crisis, transitional support, housing, referral and information.

Youth Speak Out:

Workshops designed for youth, 13- 18 yrs, offered at various locations across Peel. Self-esteem, anger management, body image, healthy relationships etc

Speakers Bureau:

Public education and awareness; school presentations; health fairs, etc

Volunteer partnership: Connecting clients to volunteers for companionship and support.

ACKNOWLEDGMENTS

The Peel Committee Against Woman Abuse would like to thank our funders for their generous support. Printing this booklet was generously funded by The Ontario Trillium Foundation.

THE ONTARIO
TRILLIUM
FOUNDATION



LA FONDATION
TRILLIUM
DE L'ONTARIO



United Way
of Peel Region



Ontario

MINISTRY OF COMMUNITY
AND SOCIAL SERVICES
MINISTÈRE DES SERVICES
SOCIAUX ET COMMUNAUTAIRES

Region of Peel
Working for you

For additional copies of the Quick Reference Guide
please contact :



PCAWA

PEEL COMMITTEE AGAINST WOMAN ABUSE

Peel Committee Against Woman Abuse (PCAWA)
1515 Matheson Blvd. East, Suite 103
Mississauga, Ontario L4W 2P5

Telephone: (905) 282-9792

Fax: (905) 282-9669

email: pcawa@pcawa.org

For a detailed description of the agencies listed in this guide
please visit our website at

www.pcawa.org

